

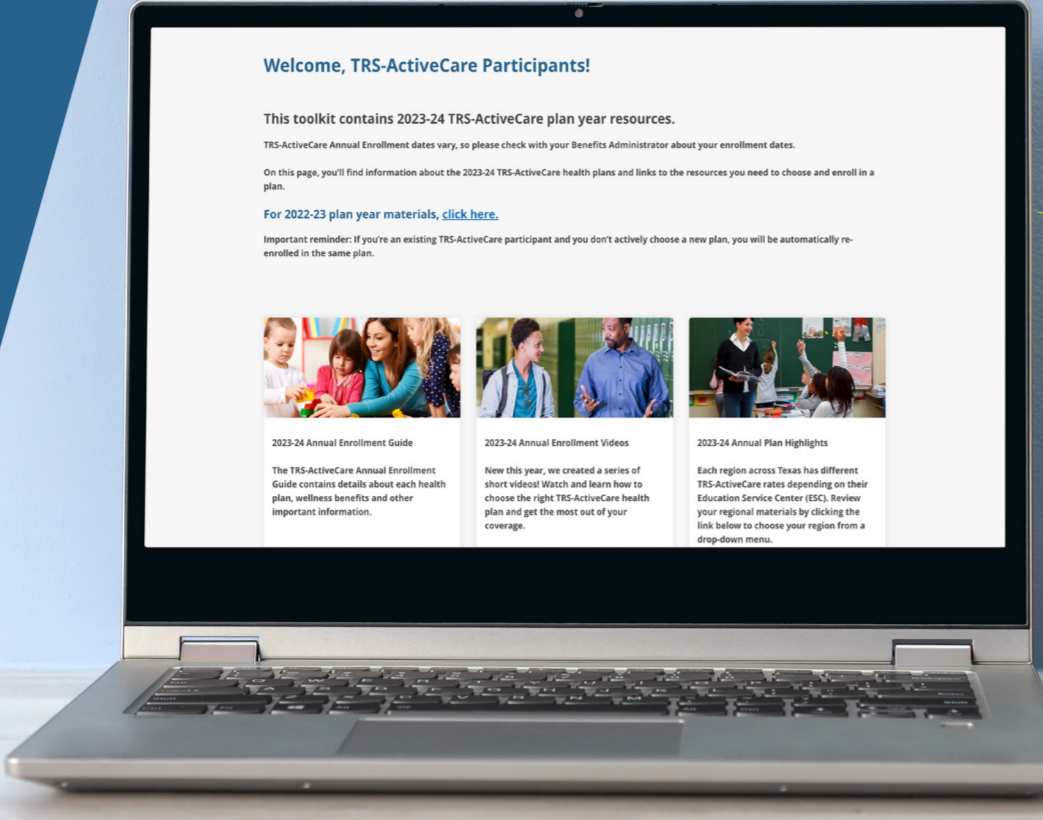
Check out your 2023-24 plan options



[Plan Highlights](#)
[Doctors and Hospitals](#)
[Health and Wellbeing](#)
[Tools and Resources](#)

Ready... Set... Annual Enrollment

Choose a Plan



Check with your Benefits Administrator for your district's specific Annual Enrollment dates for TRS-ActiveCare.

Health insurance can be complicated. So, this year, we're doing things a little differently.



Check out our [Annual Enrollment Video Series](#).

We've created several short videos that answer your questions about choosing and using your coverage.

Annual Enrollment videos include:

How to choose the best plan for your family

This video provides a detailed overview of the TRS-ActiveCare plans for 2023-24. Watch the whole thing or use the interactive display to skip to the plan you want.

How to compare benefits of each plan

Get a closer look at each plan's benefits to compare and contrast.

How to figure out your monthly premiums

Learn how to find your combined employer and state contribution to calculate your monthly premium.

How to use your temporary ID card

You can use your coverage on day one, even if you haven't received your ID card in the mail.

How to understand the terminology

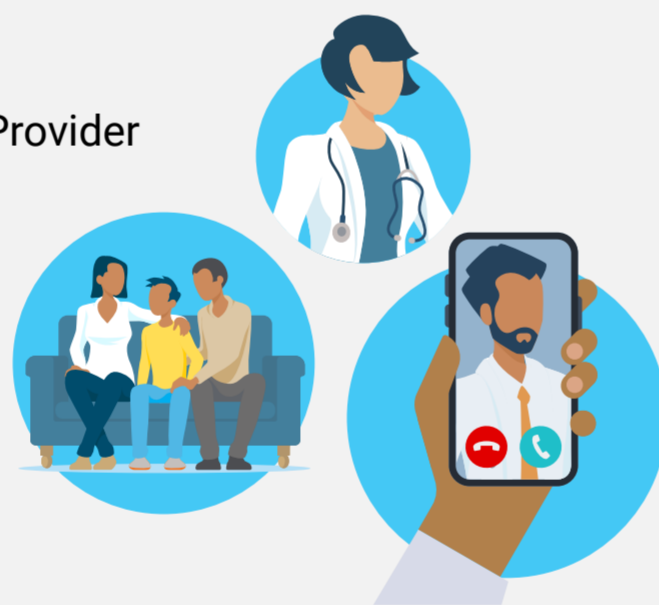
This overview of the most common terms takes the confusion out of health care.

How to figure out your real insurance costs


Our new digital worksheet combines Plan Highlights with customized and fillable fields to estimate your health care costs for the year. This can help you choose the plan that makes the most sense for your family.

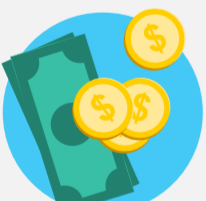
Once the plan year starts on Sept 1, you'll have access to more than a dozen new videos including:


- How to choose or change your Primary Care Provider
- How to get mental health care
- How to use TRS virtual health
- How to get help with your plan 24/7
- How to get a referral
- How to get prior authorization





You can see the Annual Enrollment Video Series and other Annual Enrollment resources in one place in the TRS-ActiveCare Enrollment Toolkit:

- 

2023-24 Annual Enrollment Guide
This is your one-stop shop for everything Annual Enrollment
- 

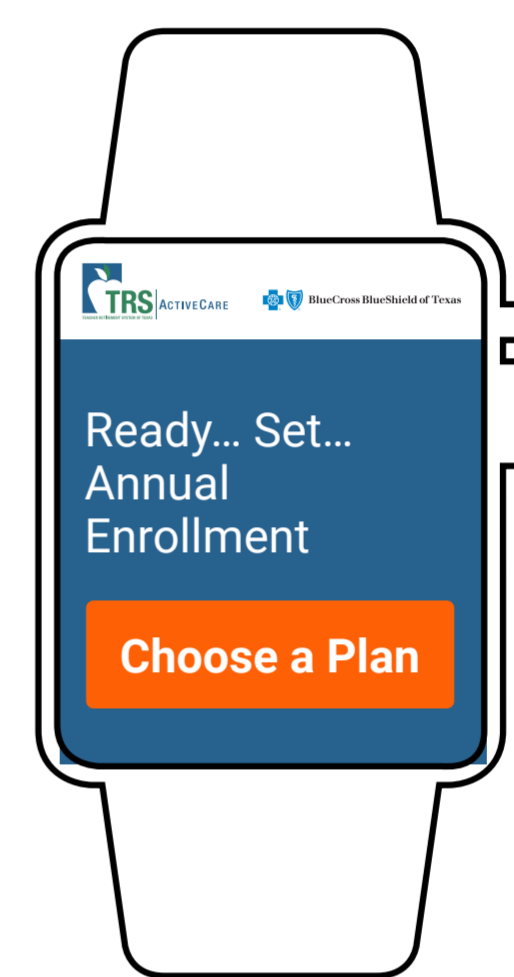
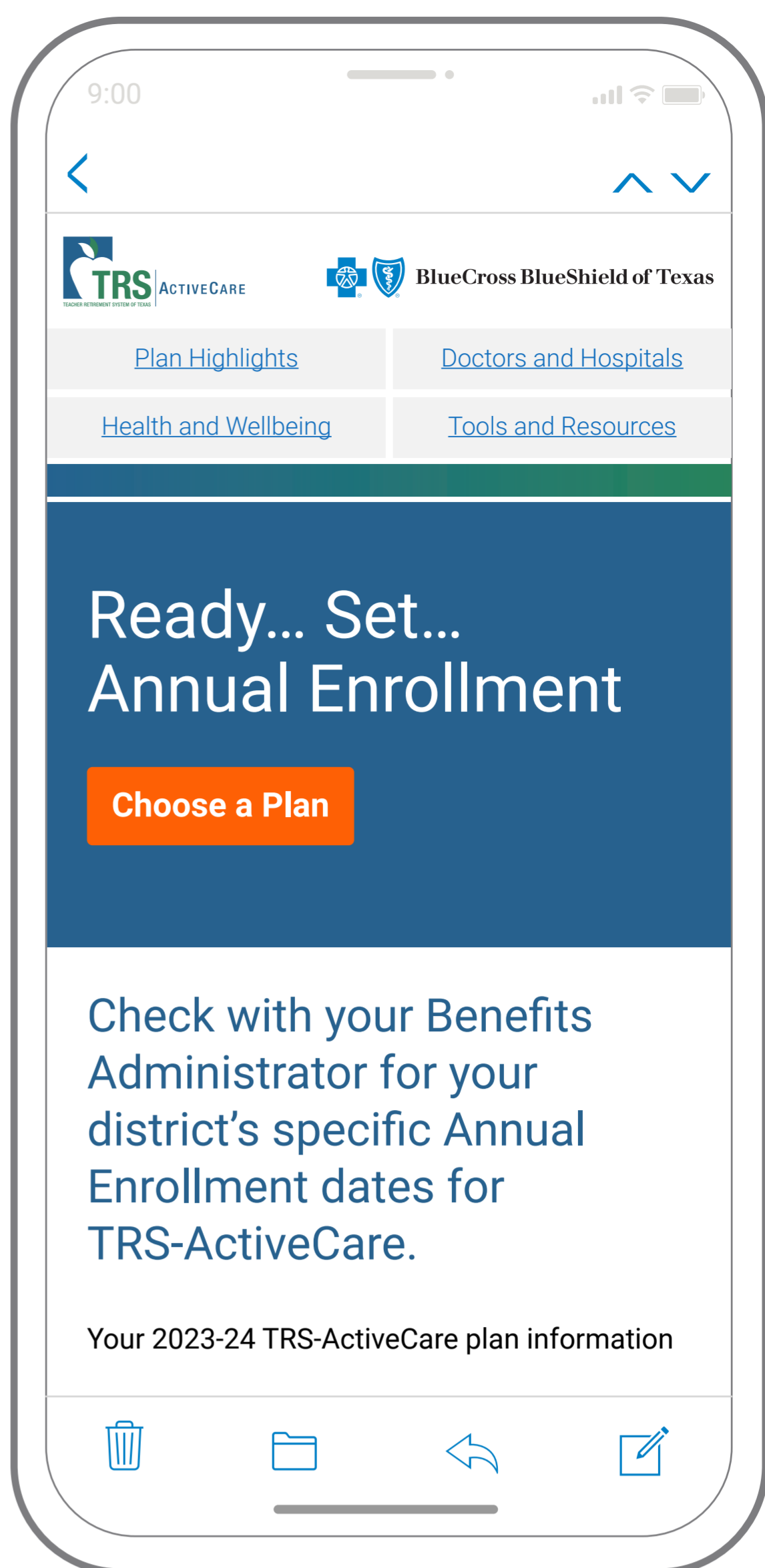
Plan Highlights
Select your region from the drop-down to see your rates and download your district's version.
- 

Provider Finder®
Check to make sure your providers are in network when choosing a plan.
- 

Benefits Booklets
Click on individual plan names to get details about coverage.
- 

Need more help picking your plan?
Call a Personal Health Guide 24/7 at **1-866-355-5999** or chat through the App anytime.

[Visit the Toolkit](#)



www.bcbstx.com/trsactivecare



Blue Cross and Blue Shield of Texas, a Division of Health Care Service Corporation, a Mutual Legal Reserve Company, an Independent Licensee of the Blue Cross and Blue Shield Association

1001 E. Lookout Drive, Richardson, TX 75082
© Copyright 2023 Health Care Service Corporation. All Rights Reserved.

[Legal and Privacy](#) | [Non-Discrimination Notice](#) | [Language Assistance](#) | [Update Your Preferences](#) | [Unsubscribe](#)
[View in Web Browser](#)