

# Cost and Utilization Components Compared to Peers

**Solutions ID** TX123456789  
**Specialty** Obstetrics-Gynecology  
**Area** Dallas  
**MEG** 203  
**MEG Description** Delivery, Vaginal  
**Severity** 1.00  
**Time Period** 1  
**Comorbidity Group II**

**Report Date** 9/17/2007

| Amount per Episode | Allowed     | Expected    |
|--------------------|-------------|-------------|
|                    | \$ 7,558.54 | \$ 6,912.00 |

| Episode Count | SolutionsID / Working Specialty | Comparison | TX State Comparison |
|---------------|---------------------------------|------------|---------------------|
|               | 9                               | 1,009      | 6,295               |

| INPATIENT SERVICES OVERVIEW  | SolutionsID / Working Specialty | Comparison  | TX State Comparison |
|--|---------------------------------|-------------|---------------------|
| Admits Per 100 Episodes  | 100.00                          | 104.66      | 104.50              |
| Admit Days Per 100 Episodes  | 211.11                          | 226.56      | 213.15              |
| Average Length of Stay   | 2.11                            | 2.16        | 2.04                |
| Allowed Admit Amount Per Episode (inpatient dollars divided by number of episodes) | \$ 6,102.31                     | \$ 5,787.01 |                     |
| Allowed Amount Per Admit (inpatient dollars divided by number of admits)           | \$ 6,102.31                     | \$ 5,529.34 |                     |

| AMBULATORY SERVICES OVERVIEW                       | SolutionsID / Working Specialty | Comparison | TX State Comparison |
|--|---------------------------------|------------|---------------------|
| Allowed Amount Per Episode Ambulatory Professional | \$ 872.46                       | \$ 834.64  |                     |
| Allowed Amount Per Episode Ambulatory Facility     | \$ 583.78                       | \$ 318.59  |                     |
| Visits Per 100 Episodes Ambulatory Facility        | 200.00                          | 76.71      | 103.07              |

| AMBULATORY SERVICES OVERVIEW                    | SolutionsID / Working Specialty | Comparison | TX State Comparison |
|---|---------------------------------|------------|---------------------|
| Allowed Amount Per Episode Ambulatory Office    | \$ 866.24                       | \$ 683.22  |                     |
| Visits Per 100 Episodes Ambulatory Office       | 833.33                          | 640.24     | 657.03              |
| Allowed Amount Per Episode Ambulatory ER        | \$ -                            | \$ 21.42   |                     |
| Visits Per 100 Episodes Ambulatory ER           | -                               | 7.43       | 9.66                |
| Allowed Amount Per Episode Ambulatory Lab       | \$ 411.72                       | \$ 245.31  |                     |
| Services Per 100 Episodes Ambulatory Lab        | 2,377.78                        | 1,247.57   | 1,489.91            |
| Allowed Amount Per Episode Ambulatory Radiology | \$ 505.47                       | \$ 357.91  |                     |
| Services Per 100 Episodes Ambulatory Radiology  | 477.78                          | 254.51     | 233.17              |

High level overviews of inpatient and ambulatory services are provided. In the Ambulatory Services Overview, claims are summarized at the Professional and Facility levels.

In the Ambulatory Services Components section, a different perspective from the Ambulatory Services Overview is provided.

Ambulatory Office includes professional services provided in an office setting.

Ambulatory ER includes both facility services and professional services provided in the ambulatory emergency room setting (not as part of an admission).

Ambulatory Lab includes ambulatory laboratory and pathology services, facility and professional.

Ambulatory Radiology includes ambulatory radiology and imaging services, both facility and professional.

## CPT Codes in Percent of Episodes Compared to Peers

**Solutions ID** TX123456789  
**Specialty** Obstetrics-Gynecology  
**Area** Dallas  
**MEG** 203  
**MEG Description** Delivery, Vaginal  
**Severity** 1.00  
**Time Period** 1  
**Comorbidity Group** II

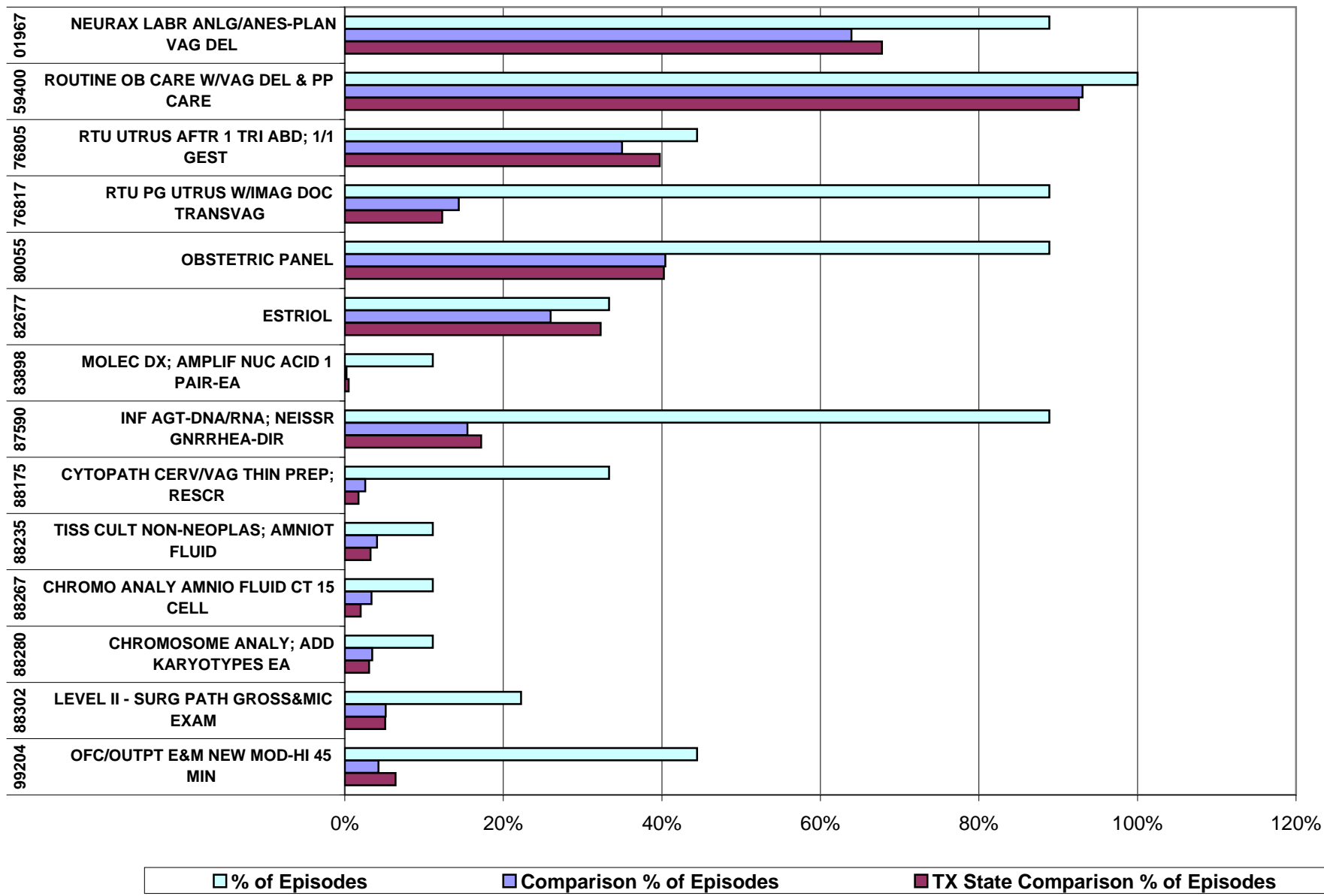
**Report Date** 9/17/2007

| CPT / HCPCS Code | Description                         | % of Episodes | Comparison % of Episodes | TX State Comparison % of Episodes | Relative Cost |
|------------------|-------------------------------------|---------------|--------------------------|-----------------------------------|---------------|
| 00851            | ANES-INTRAPER W/LAP; TUBAL LIG      | 11.11%        | 4.86%                    | 4.91%                             | \$\$          |
| 01960            | ANESTHESIA VAGINAL DELIVERY ONLY    | 0.00%         | 11.89%                   | 4.50%                             | \$\$\$\$      |
| 01967            | NEURAX LABR ANLG/ANES-PLAN VAG DEL  | 88.89%        | 63.92%                   | 67.77%                            | \$\$\$\$      |
| 36415            | COLLECTION VENOUS BLD VENIPUNCTURE  | 77.78%        | 70.17%                   | 70.55%                            | \$            |
| 36600            | ART PUNCTURE WITHDRAWAL BLD DX      | 0.00%         | 3.77%                    | 0.60%                             | \$            |
| 58605            | LIG FALLOP TUBE ABD/VAG PP-SEP PROC | 11.11%        | 5.35%                    | 5.00%                             | \$\$          |
| 59000            | AMNIOCENTESIS; DIAGNOSTIC           | 22.22%        | 4.36%                    | 3.81%                             | \$            |
| 59025            | FETAL NON-STRESS TEST               | 0.00%         | 15.66%                   | 20.03%                            | \$            |
| 59200            | INSERTION OF CERVICAL DILATOR       | 0.00%         | 3.27%                    | 1.32%                             | \$            |
| 59400            | ROUTINE OB CARE W/VAG DEL & PP CARE | 100.00%       | 93.06%                   | 92.60%                            | \$\$\$\$\$    |
| 59409            | VAGINAL DELIVERY ONLY;              | 0.00%         | 2.28%                    | 3.05%                             | \$\$\$\$      |
| 59410            | VAGINAL DEL ONLY; INCL PP CARE      | 0.00%         | 5.75%                    | 5.54%                             | \$\$\$\$      |
| 59425            | ANTEPARTUM CARE ONLY; 4-6 VISITS    | 0.00%         | 2.08%                    | 1.99%                             | \$\$\$\$\$    |
| 76801            | RTU PG UTRUS 1 TRI ABD;1/1 GEST     | 0.00%         | 13.78%                   | 10.37%                            | \$\$\$        |
| 76805            | RTU UTRUS AFTR 1 TRI ABD; 1/1 GEST  | 44.44%        | 34.99%                   | 39.75%                            | \$\$\$\$      |
| 76811            | RTU PG UTRUS FETL ANAT ABD;1/1 GEST | 22.22%        | 28.44%                   | 19.79%                            | \$\$\$\$      |
| 76815            | RTU PG UTRUS LTD 1/MORE FETUSES     | 11.11%        | 13.48%                   | 13.76%                            | \$\$\$        |
| 76816            | RTU PG UTRUS F/U TRANSABD FETUS     | 22.22%        | 19.52%                   | 16.66%                            | \$\$\$        |
| 76817            | RTU PG UTRUS W/IMAG DOC TRANSVAG    | 88.89%        | 14.37%                   | 12.30%                            | \$\$\$        |
| 76818            | FETAL BIOPHYS PROFILE W/NONSTRESS   | 11.11%        | 8.23%                    | 5.83%                             | \$\$\$        |
| 76827            | DOPPLR ECHO FETL PULSE&/CONT; CMPL  | 11.11%        | 1.98%                    | 2.19%                             | \$\$\$        |
| 76830            | ULTRASOUND TRANSVAGINAL             | 0.00%         | 2.87%                    | 2.86%                             | \$\$\$        |
| 76946            | US GUID AMNIO IMAG SUPERVIS&INTEPR  | 22.22%        | 3.96%                    | 3.51%                             | \$\$\$        |
| 80048            | BASIC METABOLIC PANEL               | 0.00%         | 6.24%                    | 3.42%                             | \$            |
| 80053            | COMPREHENSIVE METABOLIC PANEL       | 44.44%        | 14.67%                   | 8.85%                             | \$\$          |
| 80055            | OBSTETRIC PANEL                     | 88.89%        | 40.44%                   | 40.24%                            | \$\$\$\$      |
| 80076            | HEPATIC FUNCTION PANEL              | 0.00%         | 3.17%                    | 3.65%                             | \$\$          |
| 80101            | RX SCR N QUAL; RX CLASS MTHD EA RX  | 0.00%         | 3.07%                    | 3.64%                             | \$\$\$\$      |
| 80500            | CLINIC PATH CONS; LTD W/O REVIEW    | 0.00%         | 7.43%                    | 1.56%                             | \$\$\$\$      |
| 81000            | UA DIPSTIK/TABLET; NON-AUTO W/MICRO | 0.00%         | 12.98%                   | 8.88%                             | \$            |
| 81001            | UA DIP STICK/TABLET; AUTO W/MICRO   | 0.00%         | 9.71%                    | 26.13%                            | \$            |
| 81002            | UA DIP STIK/TABL;WO MICRO NON-AUTO  | 11.11%        | 18.14%                   | 23.35%                            | \$            |
| 81003            | UA DIP STIK/TABLET; W/O MICRO AUTO  | 0.00%         | 8.42%                    | 13.36%                            | \$            |
| 81025            | URIN PG TST VISUAL COLR COMPAR METH | 0.00%         | 9.22%                    | 7.75%                             | \$            |
| 82105            | ALPHA-FETOPROTEIN; SERUM            | 33.33%        | 28.34%                   | 34.00%                            | \$\$\$        |
| 82106            | ALPHA-FETOPROTEIN; AMNIOTIC FLUID   | 11.11%        | 3.57%                    | 2.86%                             | \$\$\$        |
| 82248            | BILIRUBIN; DIRECT                   | 33.33%        | 0.99%                    | 0.79%                             | \$            |
| 82565            | CREATININE; BLOOD                   | 0.00%         | 5.25%                    | 3.46%                             | \$            |
| 82677            | ESTRIOL                             | 33.33%        | 25.97%                   | 32.26%                            | \$\$\$\$      |
| 82731            | FETAL FIBRONECTIN CERV/VAG SECRETNS | 0.00%         | 4.76%                    | 2.45%                             | \$\$\$\$      |
| 82803            | GASES BLOOD ANY COMBO               | 0.00%         | 5.15%                    | 3.02%                             | \$            |
| 82947            | GLUCOSE; QUANTITATIVE BLOOD         | 0.00%         | 9.42%                    | 9.86%                             | \$            |
| 82950            | GLUCOSE; POST GLUCOSE DOSE          | 100.00%       | 51.83%                   | 56.81%                            | \$            |
| 82951            | GLUCOSE; TOLERANCE TEST 3 SPECIMENS | 22.22%        | 9.81%                    | 11.29%                            | \$\$          |
| 82952            | GLU; TOLERANCE EA ADD BEYOND 3 SPEC | 22.22%        | 8.03%                    | 9.69%                             | \$            |
| 82962            | GLU BLD MONITR CLEARED-FDA-HOME USE | 0.00%         | 2.08%                    | 1.19%                             | \$            |
| 83021            | HGB FRACTIONATION&QUAN; CHROMATGRPH | 11.11%        | 0.99%                    | 1.43%                             | \$\$\$        |
| 83615            | LACTATE DEHYDROGENASE;              | 44.44%        | 2.38%                    | 1.87%                             | \$            |

| CPT / HCPCS Code | Description                          | % of Episodes | Comparison % of Episodes | TX State Comparison % of Episodes | Relative Cost |
|------------------|--------------------------------------|---------------|--------------------------|-----------------------------------|---------------|
| 83632            | LACTOGN HUMN PLACENT HUMN C SOMATOM  | 0.00%         | 6.84%                    | 1.40%                             | \$\$\$\$      |
| 83735            | MAGNESIUM                            | 0.00%         | 2.08%                    | 1.67%                             | \$            |
| 83890            | MOLECLR DXS; MOLECLR ISOLAT/EXTRAC   | 0.00%         | 7.14%                    | 7.85%                             | \$            |
| 83891            | MOLEC DX;ISOLAT/EXTRAC NUCLEIC ACID  | 11.11%        | 3.17%                    | 4.35%                             | \$            |
| 83892            | MOLECULAR DXS; ENZYMATIC DIGESTION   | 11.11%        | 1.29%                    | 3.54%                             | \$\$          |
| 83893            | MOLEC DX; DOT/SLOT BLOT PRODUCTION   | 11.11%        | 1.49%                    | 1.41%                             | \$\$          |
| 83894            | MOLECLR DXS; SEP GEL ELEC-PHORE      | 11.11%        | 7.83%                    | 8.75%                             | \$\$          |
| 83897            | MOLECLR DXS; NUCLEIC ACID TRANSFER   | 11.11%        | 0.10%                    | 0.13%                             | \$\$          |
| 83898            | MOLEC DX; AMPLIF NUC ACID 1 PAIR-EA  | 11.11%        | 0.20%                    | 0.49%                             | \$\$\$\$      |
| 84144            | PROGESTERONE                         | 22.22%        | 4.66%                    | 5.32%                             | \$\$\$        |
| 84443            | THYROID STIMULATING HORMONE          | 11.11%        | 21.61%                   | 17.81%                            | \$\$\$        |
| 84450            | TRANSFERASE; ASPARTATE AMINO         | 0.00%         | 4.06%                    | 3.07%                             | \$            |
| 84550            | URIC ACID; BLOOD                     | 44.44%        | 4.76%                    | 5.19%                             | \$            |
| 84702            | GONADOTROPIN CHORIONIC; QUAN         | 44.44%        | 37.26%                   | 39.19%                            | \$\$          |
| 85007            | BLD CNT; SMER MIC EX MNL DIFF WBC    | 0.00%         | 2.78%                    | 5.02%                             | \$            |
| 85013            | BLOOD COUNT; SPUN MICROHEMATOCRIT    | 0.00%         | 3.57%                    | 0.87%                             | \$            |
| 85014            | BLOOD COUNT; HEMATOCRIT              | 100.00%       | 40.54%                   | 36.27%                            | \$            |
| 85018            | BLOOD COUNT; HEMOGLOBIN              | 100.00%       | 36.97%                   | 35.93%                            | \$            |
| 85025            | BLD CNT;CMPL AUTO&AUTO DIFF WBC CNT  | 100.00%       | 86.72%                   | 80.73%                            | \$            |
| 85027            | BLOOD COUNT; COMPLETE AUTOMATIC      | 0.00%         | 23.89%                   | 23.83%                            | \$            |
| 85048            | BLOOD COUNT; LEUKOCYTE AUTO          | 0.00%         | 2.58%                    | 1.22%                             | \$            |
| 85362            | FIBRN DEGRAD PROD; AGGLUT-SEMIQUAN   | 11.11%        | 0.40%                    | 0.68%                             | \$            |
| 85384            | FIBRINOGEN; ACTIVITY                 | 11.11%        | 1.78%                    | 1.87%                             | \$            |
| 85460            | HGB/RBC FETAL-HEMORR; DIFF LYSIS     | 11.11%        | 1.29%                    | 0.92%                             | \$            |
| 85461            | HGB/RBC FETAL-HEMORR; ROSETTE        | 0.00%         | 2.78%                    | 2.65%                             | \$            |
| 85610            | PROTHROMBIN TIME;                    | 11.11%        | 6.94%                    | 4.13%                             | \$            |
| 85660            | SICKLING OF RBC REDUCTION            | 11.11%        | 3.87%                    | 3.61%                             | \$            |
| 85730            | P T T; PLASMA/WHOLE BLOOD            | 11.11%        | 3.57%                    | 3.73%                             | \$            |
| 86336            | INHIBIN A                            | 33.33%        | 19.92%                   | 22.21%                            | \$\$\$        |
| 86592            | SYPHILIS TEST; QUALITATIVE           | 22.22%        | 63.63%                   | 74.95%                            | \$            |
| 86593            | SYPHILIS TEST; QUANTITATIVE          | 100.00%       | 11.10%                   | 4.10%                             | \$            |
| 86701            | ANTIBODY; HIV-1                      | 100.00%       | 51.14%                   | 53.38%                            | \$\$          |
| 86703            | ANTIBODY; HIV-1&HIV-2 SINGLE ASSAY   | 0.00%         | 24.28%                   | 36.54%                            | \$\$          |
| 86762            | ANTIBODY; RUBELLA                    | 22.22%        | 11.20%                   | 18.57%                            | \$\$          |
| 86803            | HEPATITIS C ANTIBODY;                | 0.00%         | 2.58%                    | 3.57%                             | \$\$\$        |
| 86850            | ANTIBDY SCR RBC EA SERUM TECHNIQUE   | 0.00%         | 33.60%                   | 42.16%                            | \$            |
| 86885            | ANTI HUMAN GLOB TEST; INDIR QUAL EA  | 33.33%        | 22.20%                   | 18.86%                            | \$            |
| 86900            | BLOOD TYPING; ABO                    | 100.00%       | 76.02%                   | 64.83%                            | \$            |
| 86901            | BLOOD TYPING; RH                     | 100.00%       | 75.92%                   | 70.66%                            | \$            |
| 87070            | CULT BACT;NO URINE/BLD/STOOL AEROBC  | 88.89%        | 8.13%                    | 7.63%                             | \$            |
| 87077            | CULT BACT; AEROB-ADD-DEFIN ID-EA     | 0.00%         | 2.38%                    | 2.56%                             | \$            |
| 87081            | CULT PRESUMP PATH ORGNSMS SCR ONLY;  | 100.00%       | 38.85%                   | 39.71%                            | \$            |
| 87086            | CULT BACTERL; QUAN COLONY CNT URINE  | 77.78%        | 41.63%                   | 39.56%                            | \$            |
| 87088            | CULT BACT; W/ISOLTN & ID ISOL-URINE  | 0.00%         | 12.69%                   | 9.64%                             | \$            |
| 87147            | CULT TYPE; IMMUNOLOG METHD/ANTISERU  | 0.00%         | 2.97%                    | 2.72%                             | \$            |
| 87149            | CULT TYPING; ID NUCLEIC ACID PROBE   | 44.44%        | 8.82%                    | 11.55%                            | \$\$\$        |
| 87184            | SUSCEPT-ANTIMICROB; DISK METH-PLATE  | 11.11%        | 1.59%                    | 2.00%                             | \$            |
| 87186            | SUSCEPT-ANTIMICRB; MICRO/AGAR DILUT  | 0.00%         | 2.18%                    | 2.75%                             | \$            |
| 87210            | SMEAR-PRIM W/INTERPT; WET MOUNT      | 0.00%         | 3.87%                    | 4.24%                             | \$            |
| 87340            | INF AGT-IMMUNOAS; HEP B SURF ANTIG   | 100.00%       | 55.30%                   | 57.65%                            | \$\$          |
| 87390            | INF AGT-IMMUNOASSAY; HIV-1           | 11.11%        | 6.64%                    | 1.75%                             | \$\$\$        |
| 87490            | INF AGT-DNA/RNA; CHLAMYD TRACH-DIR   | 88.89%        | 16.25%                   | 17.78%                            | \$\$\$        |
| 87491            | INF AGT-DNA/RNA; CHLAMYD TRACH-AMP   | 11.11%        | 13.28%                   | 15.55%                            | \$\$\$\$      |
| 87590            | INF AGT-DNA/RNA; NEISSR GNRRHEA-DIR  | 88.89%        | 15.46%                   | 17.20%                            | \$\$\$        |
| 87591            | INF AGT-DNA/RNA; NEISSR GNRRHEA-AMP  | 11.11%        | 13.38%                   | 15.68%                            | \$\$\$\$      |
| 87800            | INF AGT-DNA/RNA MX ORG; DIR PROBE    | 0.00%         | 2.38%                    | 1.91%                             | \$\$\$\$      |
| 88141            | CYTOPATH CERV/VAG RQR INTEPR PHYS    | 11.11%        | 2.38%                    | 2.38%                             | \$\$\$        |
| 88142            | CYTPATH CERV/VAG; THIN PREP; MNL SCR | 88.89%        | 26.56%                   | 25.91%                            | \$\$\$        |
| 88175            | CYTOPATH CERV/VAG THIN PREP; RESCR   | 33.33%        | 2.58%                    | 1.72%                             | \$\$\$\$      |

| CPT / HCPCS Code | Description                         | % of Episodes | Comparison % of Episodes | TX State Comparison % of Episodes | Relative Cost |
|------------------|-------------------------------------|---------------|--------------------------|-----------------------------------|---------------|
| 88235            | TISS CULT NON-NEOPLAS; AMNIOT FLUID | 11.11%        | 4.06%                    | 3.26%                             | \$\$\$\$      |
| 88267            | CHROMO ANALY AMNIO FLUID CT 15 CELL | 11.11%        | 3.37%                    | 2.00%                             | \$\$\$\$      |
| 88280            | CHROMOSOME ANALY; ADD KARYOTYPES EA | 11.11%        | 3.47%                    | 3.05%                             | \$\$\$\$      |
| 88291            | CYTOGEN & MOLEC CYTOGEN INTER & RPT | 11.11%        | 4.16%                    | 3.13%                             | \$\$\$        |
| 88302            | LEVEL II - SURG PATH GROSS&MIC EXAM | 22.22%        | 5.15%                    | 5.10%                             | \$\$\$\$      |
| 88307            | LEVEL V- SURG PATH GROSS/MICRO EXAM | 0.00%         | 9.42%                    | 13.42%                            | \$\$\$\$      |
| 90780            | IV INFUS THERAPY/DX-BY PHYS;TO 1 HR | 0.00%         | 2.97%                    | 0.97%                             | \$            |
| 90781            | IV INFUS THERAPY/DX-BY PHYS;EA HR-8 | 0.00%         | 2.08%                    | 0.40%                             | \$            |
| 90782            | THERAPEUTIC PROPH/DX INJ; SUBQ/IM   | 11.11%        | 5.05%                    | 5.62%                             | \$            |
| 99000            | HANDL/CONVEY SPECMN-OFFIC TO LAB    | 11.11%        | 16.25%                   | 16.51%                            | \$            |
| 99203            | OFC/OUTPT E&M NEW MOD-SEVER 30 MIN  | 0.00%         | 4.26%                    | 3.78%                             | \$\$\$\$      |
| 99204            | OFC/OUTPT E&M NEW MOD-HI 45 MIN     | 44.44%        | 4.26%                    | 6.39%                             | \$\$\$\$      |
| 99205            | OFC/OUTPT E&M NEW MOD-HI 60 MIN     | 0.00%         | 6.05%                    | 6.00%                             | \$\$\$\$      |
| 99211            | OFC/OUTPT E&M ESTAB 5 MIN           | 0.00%         | 4.96%                    | 4.48%                             | \$            |
| 99213            | OFC/OUTPT E&M ESTAB LOW-MOD 15 MIN  | 11.11%        | 24.68%                   | 20.54%                            | \$\$          |
| 99214            | OFC/OUTPT E&M ESTAB MOD-HI 25 MIN   | 55.56%        | 18.33%                   | 14.25%                            | \$\$\$        |
| 99215            | OFC/OUTPT E&M ESTAB MOD-HI 40 MIN   | 0.00%         | 5.15%                    | 8.01%                             | \$\$\$\$      |
| 99219            | INIT OBSRV CARE-DAY E&M MOD SEVRITY | 0.00%         | 2.78%                    | 2.14%                             | \$\$\$\$      |
| 99238            | HOSPITAL D/C DAY MGMT; 30 MIN/LESS  | 0.00%         | 3.67%                    | 3.62%                             | \$\$\$        |
| 99241            | OFFICE CNSLT NEW/ESTAB MINOR 15 MIN | 0.00%         | 7.04%                    | 2.70%                             | \$\$          |
| 99242            | OFC CNSLT NEW/EST LOW SEVER 30 MIN  | 0.00%         | 3.17%                    | 2.37%                             | \$\$\$\$      |
| 99244            | OFC CNSLT NEW/ESTAB MOD-HI 60 MIN   | 0.00%         | 8.13%                    | 3.40%                             | \$\$\$\$      |
| 99284            | ER VISIT E&M HIGH SEVER URGENT EVAL | 0.00%         | 2.97%                    | 3.32%                             | \$\$\$\$      |
| A4550            | SURGICAL TRAYS                      | 0.00%         | 2.78%                    | 1.83%                             | \$            |
| J2790            | RHO D IMMUNE GLOBULIN INJ           | 11.11%        | 4.56%                    | 4.85%                             | \$\$\$        |

**CPT Codes in Greater Percent of Episodes Compared to Peers  
Dallas Obstetrics-  
Delivery, Vaginal Severity 1.00 Comorbidity Group II Time Period 1**



This chart contains the TOP 14 CPT codes based on the % of episodes, the comparison % of episodes and their difference.